



Khodiyar
Enterprise

WHERE EVERY DETAIL MAKES AN **IMPRESSION.**

Crafting Your Vision into Reality.



SOLVENT PRINTER



ECO SOLVENT PRINTER



UV PRINTER

INKS & CONSUMABLES

AUTHORISED DEALER OF



SMTJET

锐 智 科 技

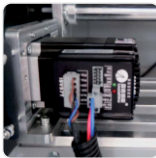
ECO SOLVENT **PRINTER**

SJ-E1/A1-2002/4



Performance Features:

- High intergrated boards, imported power control system, stable and efficient.
- All aluminium alloy carriage station and beam, mute rail, accurate and durable.
- Teflon platform, high resistance pinch roller, ensures accurate feeding movement.
- Bulk ink supply system, infrared heating fan, print smoothly and drying lastly.
- Maintop RIP software, color brighter, speed faster and more functions.
- Adjustable head height, carriage anti-collision and many humanized designs.



Leadshine Motor



Epson i3200U1 Printhead



THK Mute Guide Rail



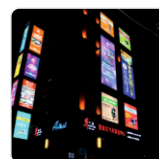
All Aluminium Alloy Carriage Station



LED Curing Lamp



High Performance Control System



Application



Mode	SJ-E1/A1-2002/4	
Printhead and Quantity	I3200-E1/A1	2/4PCS
Printing Speed / Mode	4PASS: 12m ² /h 6PASS: 8m ² /h	
Printing Width	1.9M	
Heating System	Standard with front infrared dryer	
Temperature / Humidity	Temperature: 20-28°C, Humidity: 40-60%	
Power	Power: 1300W External drying: 3600W	
RIP Software	Maintop (Optional Photoprint, ONYX)	
Media Type	All kinds of indoor and outdoor advertising materials and decoration materials	
Packing Dimensions (mm)	L3700*W750*H850mm	
Net Weight/Gross Weight (KG)	208KG/314KG	239KG/345KG

ECO SOLVENT **PRINTER**

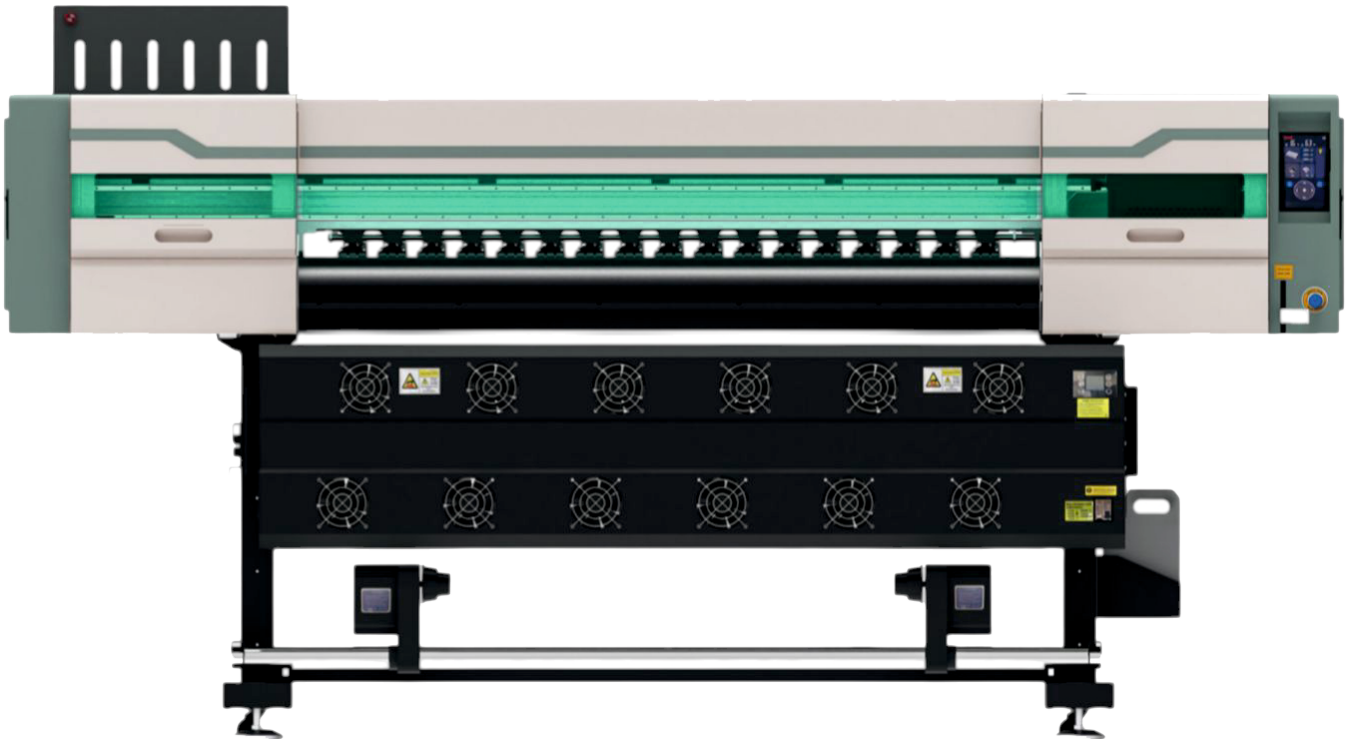
SJ-E1-1606



PRECISIONCORE
PRINTHEAD
powered by EPSON

Performance Features:

- High intergrated boards, imported power control system, stable and efficient.
- All aluminium alloy carriage station and beam, mute rail, accurate and durable.
- Teflon platform, high resistance pinch roller, ensures accurate feeding movement.
- Bulk ink supply system, infrared heating fan, print smoothly and drying lastly.
- Maintop RIP software, color brighter, speed faster and more functions.
- Adjustable head height, carriage anti-collision and many humanized designs.



Sprinkler Arrangement

喷头排列方式



Production mode

生产模式 : 110m²/h

Accuracy mode

精度模式 : 75m²/h

Print mode 打印模式

Full color mode
全彩模式



Production mode

生产模式 : 75m²/h

Accuracy mode

精度模式 : 50m²/h

Print mode 打印模式

Six-color mode
六彩模式

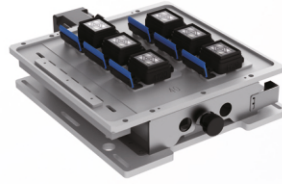
Product Core Technology

产品核心技术



Trolley structure - six staggered rows of printheads
Printhead base plate preheating system

小车结构-喷头六错排排列
打印头底板预热系统



Printhead Cleaning Unit
Printhead moisturizer

打印头清洗装置
打印头保湿装置



Intelligent Controls for Touch Panels
Intelligent control panel
Printer environment monitoring
temperature adjustment,
function control

触控屏智能控制
智能控制面板
打印机环境监测, 温度调节, 功能控制



Intelligent drying system
Preset according to different materials
Different temperatures

智能烘干系统
根据不同的材料预设不同的温度



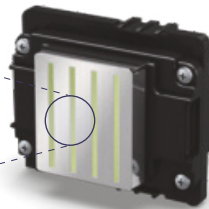
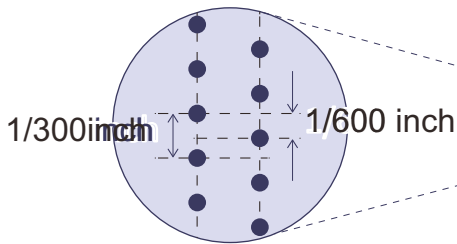
Standard loading and unwinding (load-bearing 15-20KG)
Unwinding
Damping discharging Receiving
double power motor receiving
Lightbox - Assisted Print Detectio

标配收放料(承重15-20KG)
放料-阻尼式放料
收料-双动力电机收料
灯箱-辅助打印检测



The inflatable shaft is put back and then retracted ◆ Optional
Load Capacity 150KG

气胀轴后放后收 ◆可选配
承重150KG



High resolution (600 dpi) enables output of up to 4 colors.



打印头本体上的

Epson Genuine label on the printhead body.

Multiple grayscale outputs

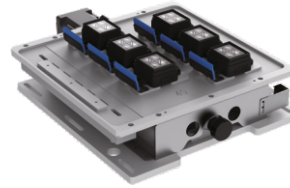
Epson's unique VSDT (Variable Droplet Technology) allows you to freely control the size of the ink droplets that are sprayed, thus reducing the graininess of the picture and presenting more details, smooth color transitions and high saturation.

Mode	SJ-E1/A1-1606	
Printhead and Quantity	I3200-E1/A1	6PCS
Printing Width	1.6M	
Heating System	Standard with front infrared dryer	
Temperature / Humidity	Temperature: 20-28°C, Humidity: 40-60%	
Power	Power: 1300W External drying: 3600W	
RIP Software	Maintop (Optional Photoprint, ONYX)	
Media Type	All kinds of indoor and outdoor advertising materials and decoration materials	
Packing Dimensions (mm)	3500*1000*850mm (L*W*H)	
Net Weight/Gross Weight (KG)	360KG/450KG	

Product Core Technology



Trolley structure - six staggered rows of printheads
Printhead base plate
preheating system



Printhead Cleaning Unit
Printhead moisturizer



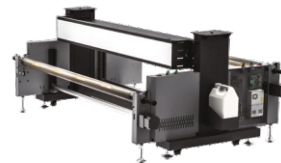
High-precision platform structure and dual straight-line silent THK guide rail



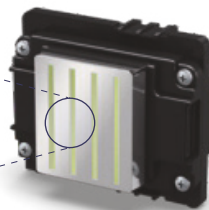
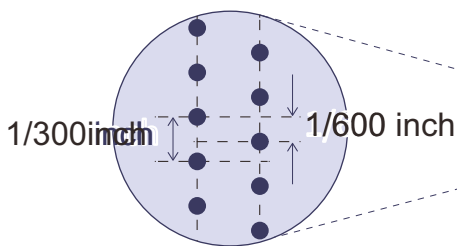
Intelligent Controls for Touch Panels
Intelligent control panel
Printer environment monitoring
temperature adjustment,
function control



Standard with loading and unloading (load capacity 15-20KG loading and unloading - damping type loading and unloading)
Feeding-double power motor feeding
Light box-assisted printing inspection



High precision pneumatic shaft rear release and front retraction assembly
◆Optional Lightbox-Assisted Print Inspection



High resolution (600 dpi) enables output of up to 4 colors.



打印头本体上的

Epson Genuine label on the printhead body.

Multiple grayscale outputs

Epson's unique VSDT (Variable Droplet Technology) allows you to freely control the size of the ink droplets that are sprayed, thus reducing the graininess of the picture and presenting more details, smooth color transitions and high saturation.

Mode	SJ-U1-1606	
Printhead and Quantity	I3200-U1	6PCS
Printing Width	1.6M	
Heating System	Standard with front infrared dryer	
Temperature / Humidity	Temperature: 20-28°C, Humidity: 40-60%	
Power	Power: 1300W External drying: 3600W	
RIP Software	Maintop (Optional Photoprint, ONYX)	
Media Type	All kinds of indoor and outdoor advertising materials and decoration materials	
Packing Dimensions (mm)	3500*1000*850mm (L*W*H)	
Net Weight/Gross Weight (KG)	360KG/450KG	

THINK IT. PRINT IT.



AUTHORISED DEALER OF



+ 91 8849335955 + 91 9328007279



khodiyar.enterprise@hotmail.com



19, B.N.-2 Ind. Estate, Nr. Kathwada GIDC,
Gate No. 5, Kathwada, Ahmedabad,
Gujarat-382430.

THANK YOU